

**MIGUEL NAJDORF:
KING OF THE KING'S INDIAN DEFENSE**

IM Nikolay Minev

**The Chess Library
Seattle, Washington**

Copyright © 1997 by The Chess Library

All rights reserved. No part of this book may be reproduced or transmitted in any form or by any means, electronic or mechanical, including photocopying, recording or by any information storage or retrieval system, without permission in writing from the Publisher:

**The Chess Library
2100 Third Avenue, Suite 905
Seattle, Washington 98121**

www.thechesslibrary.com

Miguel Najdorf: King of the King's Indian Defense
First Printing: November 1997
Second Printing: January 2007
ISBN+10: 0-9661889-1-8
ISBN+13: 978-0966188912

Other books published by The Chess Library:

"Caro-Kann: Fantasy Variation"

IM Nikolay Minev

1996, PB, AN, 71 pages (with player index)

\$9.95 plus \$1.50 shipping and handling

ISBN+10: 0-9661889-0-X

ISBN+13: 978-0966188905

CONTENTS

	Page
Najdorf and the King's Indian Defense.....	5
Table of Variations.....	17
202 KID Games from Najdorf's Practice.....	22
Index of Najdorf's opponents.....	113

MIGUEL NAJDORF and the KING'S INDIAN DEFENSE: Three Magnificent Games

Najdorf was without exaggeration a master of King's Indian Defense, one of the "magnificent five" (with Bronstein, Geller, Gligoric and Boleslavsky), who in the decade from 1945 to 1955 practically created the theoretical base of this opening that is still popular today. Najdorf's results in the 202 games of this collection (which includes only games with Najdorf playing black) is more than excellent. He won 100, lost 29, and drew 73 games, achieving 67.6% with Black. But probably more important, his games not only give answers to almost all established theoretical lines of KID, but also bring new questions about many rarely used or totally forgotten, but still interesting, continuations. Let the reader be served notice, this collection of his games is a rich field for independent analysis!

The following three heavily annotated games are some of his best. All three, but especially the first one annotated by Najdorf himself, magnificently illustrate the spirit of the King's Indian Defense. These games are also a good starting point for players who want to study the typical tactics and strategy in this opening.

[135] King's Indian Defense E89

**Bobotsov M - Najdorf M
Leipzig (ol) 1960**

Notes by GM Najdorf from "Szachy" (Poland), 2/1961.

**1.d4 Nf6 2.c4 g6 3.Nc3 Bg7 4.e4 d6 5.f3 O-O 6.Be3 e5 7.Nge2
c6 8.d5**

If 8.Qd2, then 8...exd4 9.Nxd4 d5 10.cxd5 exd5 11.e5 Ne8 12.f4 Nc7 and 13...f6 with a good game for Black, or 10.exd5 cxd5 11.Be2 dxc4! (not 11...Nc6? 12.c5! with advantage for White, Bronstein-Gligoric, Portoroz 1958) 12.Bxc4 a6 13.O-O b5 14.Bb3 Bb7=, Shocron-Najdorf, Mar del Plata 1957.

8...cxd5 9.cxd5 a6

Considered worse is 9...Nbd7 because of 10.Nb5. Pirc recommends 9...Ne8, but according to Euwe, after 10.g4 f5 11.gxf5 gxf5 White has better chances.

10.g4

Here 10.Qd2 is used more often.

10...h5

If 10...Nbd7, then 11.Ng3 followed by h2-h4-h5 with an attack.

11.h3 Nbd7 12.Bg5

Not 12.Ng3 h4 13.Nge2 Nh7 with a better game for Black.

12...Qb6!?

After the game I learned that all this is the "Bulgarian variation" by Z. Milev, published not long ago in "Shahmatna misal," which naturally was unknown to me. According to analysis there, Black's best is 12...Qa5 13.Qd2 Nh7 14.Bh4! with a better game for White (not 14.Be7 Re8 15.Bxd6 because of 15...b5, with the threat 16...Qb6 and winning a piece).

13.Qd2 Nc5 14.Rb1

If 14.Bxf6 Bxf6 15.gxh5 Qxb2! with advantage for Black, and if 14.Ng3, then 14...Nh7 15.Be3 h4 or 15.Bh4 f5! with better chances for Black.

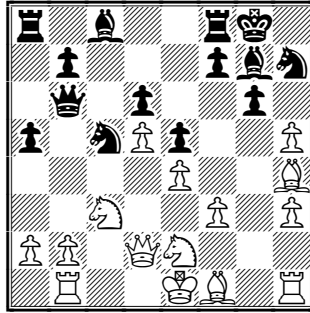
14...Nh7 15.Bh4

After 15.b4? Nxc5 16.bxc5 (16.Qxc5 Nd3+) Nxf3+ Black wins, if 15.Be3, then 15...Qd8 16.b4 Ncd7 threatening 17...h4.

15...a5

It is obvious that 16.b4 must be prevented and I decided to play for a counterattack. In such sharp positions the most important factor is not the material, but who has the initiative. As we shall see, my decision to sacrifice two pawns was right.

16.gxh5



16...f5! 17.hxg6 Nf6

At the cost of two pawns White's attack is stopped, but more important is that his pieces are not harmoniously developed.

18.Bg2

If 18.Ng3, then 18...fxe4 19.fxe4 Nfxe4! 20.Ngxe4 Nxe4 21.Nxe4 Rf4 and Black recaptures the piece with a strong attack.

18...fxe4 19.fxe4

If 19.Nxe4, then 19...Bf5.

19...Nh5 20.Rf1 Rxf1+!

But not 20...Bd7? 21.Rf7! Rxf7 22.gxf7+ Kxf7 23.Qg5.

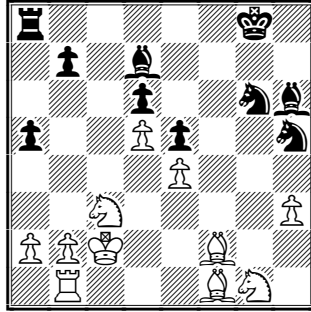
21.Bxf1 Bd7 22.Qg5 Nd3+ 23.Kd2 Nf4 24.Qg1

Here White assessed that, despite the material advantage, he lacks a good plan and offered a draw, which I rejected. It is interesting, that in the further play Black does not play for an attack, but enters into an endgame despite the two pawns less!

24...Qxg1 25.Nxg1 Bh6! 26.Kc2 Nxg6

One pawn is recaptured.

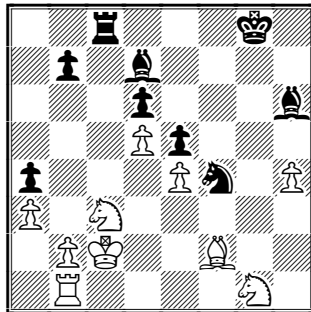
27.Bf2



27...Rc8!

The most difficult move in the whole game. In such positions the ordinary continuation is 27...Rf8, taking the open file under control and gaining a tempo. But in this particular situation, Black's Rook is not so active on the f-file, so this is not only worse, but it also forces White to the best reply 28.Bb6!. Now Black is threatening b7-b5-b4.

28.Bb6 a4 29.a3 Ng3 30.Bd3 Nf4 31.Bf2 Ngh5 32.h4 Nxd3! 33. Kxd3 Nf4+ 34.Kc2



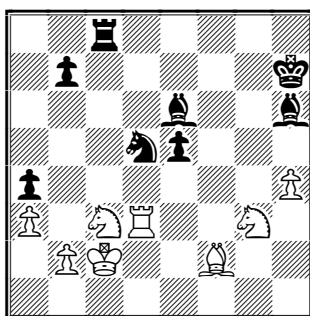
34...Nxd5!

Now the material is equal, because if 35.exd5? Bf5+ 36.Kd1 Bxb1 37.Nxb1 Rxc1+ etc.

35.Nge2 Nf6 36.Rbg1+ Kh7 37.Ng3 d5 38.exd5 Nxd5 39.Rd1 Be6

Threatening 40...Nxc3 41.bxc3 Bb3+.

40.Rd3



40...e4!

Two strong Bishops and the passed pawn in the center give Black a decisive advantage. The pawn is "taboo": 41.Ngxe4? Bf5 and wins, for example 42.Kd1 Nxc3 43.Rxc3 Rd8+, or 42.Rd4 Bg7 43.Rxa4 Bxc3 44.bxc3 Nxc3.

41.Rd4 Nxc3 42.bxc3 e3 43.Be1

If 43.Bg1 Rg8!

43...b5 44.Ne4 Bf5 45.Kd1 Bg7 46.Ng5+ Kg8 47.Rd5 Bg4+ 48.Kc2 e2

Threatening 49...Bxc3!

49.Nge4 Bf3 50.Kd3 Re8 51.Nd6 Rd8 52.Rxb5 Rxd6+ 53.Ke3
Bg4 0-1

[136] King's Indian Defense E90

**Cobo E. - Najdorf M.
Havana 1962**

This game is from the last (21st) round, and a very important game for both players. For Najdorf, the victory would mean that he would be the winner of a very strong tournament, ahead of Spassky, Smyslov, Gligoric, Polugaevsky, Pachman, Ivkov, Matanovic etc. For Cobo the victory would mean the title of International Master.

Symbols and notes by IM A. Becker.

**1.d4 Nf6 2.c4 d6 3.Nc3 Nbd7 4.e4 e5 5.Nf3 g6 6.d5 Bg7 7.Bg5
h6 8.Bh4 g5 9.Bg3 Nh5 10.Nd2 Ndf6 11.f3 Nxc3 12.hxc3 h5!
13.Qc2 Bh6! 14.O-O-O b6 15.Bd3 Bd7 16.Ne2 Qe7 17.Kb1
O-O-O 18.b4 c5 19.bxc5**

No better is 19.dxc6 Bxc6 20.Nb3 because of 20...g4! and Bh6 is very strong.

19...dxc5 20.Qb2 Rde8!

Against White's eventual break-through f4 and e4-e5.

**21.Bc2 Kb8 22.Qa3 Qd6 23.Ba4 g4 24.Bxd7 Qxd7 25.Qd3 gxf3
26.Qxf3?**

The open f-file will be in Black's possession! Natural and good was 26.gxf3 with approximately equal game.

26...Bg5 27.Nb3 Ng4 28.Rd3

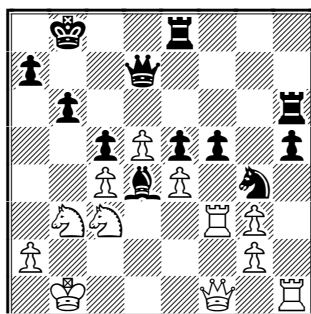
Probably now White saw that the planned 28.Rdf1 is in Black's favor after 28...Ne3! 29.Qxf7 Qa4.

28...Rh6! 29.Qf1

With the idea if 29...Rf6 30.Rf3.

29...Be3 30.Nc3 Bd4 31.Rf3 f5!

A critical position.



32.Qe2?

White should enter into complications after 32.exf5 e4 33.Rf4, and if 33...Bxc3 34.Rxg4! e3 35.Nc1! 33...Ne3 looks stronger for Black, but even then, White probably holds by 34.Qc1.

32...Bxc3 33.Rxc3 fxe4 34.Qxe4?

Cobo obviously overlooked Najdorf's 35th move. Mandatory was 34.Nd2 e3 35.Ne4 with some counter-chances.

**34...Nf2 35.Qe3 Qh7+! 36.Kb2 Nxb1 37.Qg1 Rf6 38.Qxh1
Rf2+ 39.Ka3**

39.Ka1 also loses quickly after 39...Ref8!

39...Qb7 40.Nc1 Qa6+ 41.Kb3 b5 42.Qxh5 Qa4# 0-1

[199] King's Indian Defense E99

**Taimanov M. - Najdorf M.
Zurich (ct) 1953**

Notes by GM David Bronstein (B), from his book "Mezhdunarodny turnir grosmaisterov Zurich 1953", Second edition, Moscow 1960 (as translated by J. Marfia in the excellent volume "Zurich International Chess Tournament 1953", Dover Publications, Inc., 1979); also by GM Gedeon Stahlberg and GM Paul Keres (SK), from their book "Varlds schack turneringen Neuhausen-Zurich 1953", Sveriges Schackforbunds Forlag 1954. (NM) indicates notes added by this author.

(B) - "...[T]his was one of the [tournament's] most interesting games, and the recipient of a brilliancy prize. Both of its phases - opening and middlegame - were conducted by Najdorf with such a high degree of erudition and mastery that the need of a third phase never arose."

**1.d4 Nf6 2.c4 g6 3.Nc3 Bg7 4.e4 d6 5.Nf3 O-O 6.Be2 e5 7.O-O
Nc6 8.d5**

(B) - "Not too long before this tournament, Taimanov employed

this variation... twice in the 20th USSR Championship. In both cases, he scored with one and the same plan: a pawn break on the c-file, followed by an outflanking and turning maneuver around the entire grouping of Black's pieces on the d- through g-files, leaving only the darksquare Bishop to guard his King. These games made the rounds of the chess press, and the general consensus was that they had been lost in the opening.

“However, a few players still ventured this ‘refuted’ variation; at the Mar del Plata tournament of 1953, for example, Najdorf fell victim to fashion: playing White,... he lost to Gligoric, and only drew with difficulties against Trifunovic. At the start of the tournament in Zurich, however, these games were not known to Taimanov.

“Thus, both sides played the opening with great expectations: Najdorf, having absorbed the Yugoslav analyses, which ran at least to move 21, and Taimanov, still flushed with his previous successes.”

8...Ne7 9.Ne1 Nd7 10.Be3

(NM) Recently most of the players prefer 10.Nd3 f5 11.f3 Nf6 12.Bd2 - see games 201-202.

10...f5 11.f3 f4 12.Bf2 g5

(B) - “[The position is extremely sharp, and] Black must play exactly, combining his attack with defense of the Queen's wing, especially d6 and c7 - and seize every tactical chance.”

13.Nd3

(NM) Perhaps 13.b4 or 13.Nb5 are more promising continuations.

13...Nf6

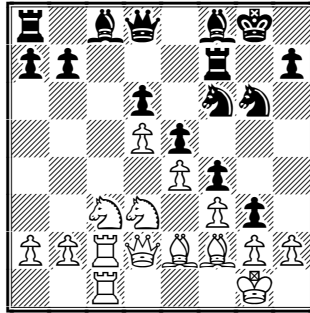
(SK) - Another idea is 13...Rf6, for example 14.g4 fxg3 15.hxg3

Rh6 16.Be3 Ng6 17.Nf2 Nf4!, Beni-Euwe, Vevey 1953.

14.c5 Ng6 15.Rc1 Rf7 16.Rc2 Bf8

(B) ‘This was the system employed by Gligoric and Trifunovic at Mar del Plata. Now the d-pawn is defended, the Rook can go to the g-file, and Black's Knights hover over [White's] King's wing. Taimanov, however, trusts the invulnerability of his position, and continues with his cavalier assault on the Queen's side.’

17.cxd6 cxd6 18.Qd2 g4 19.Rfc1 g3!



(B) - “A pawn sacrifice with an enormous future.”

20.hxg3 fxg3 21.Bxg3 Nh5 22.Bh2

(SK) - After this weak move Black's dark-square Bishop enters in the attack with decisive consequences. Mandatory was 22.Bf2.

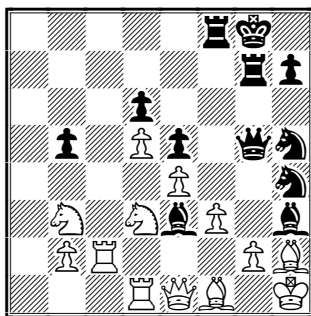
22...Be7! 23.Nb1 Bd7

(SK) - But not 23...Bg5?? 24.Rxc8!

24.Qe1 Bg5 25.Nd2 Be3+ 26.Kh1 Qg5

(B) - “Black's pieces march onto the battlefield like soldiers in column, one after the other. Here Taimanov ought to have rid himself of the Bishop at e3, even at the cost of the exchange, by playing 27.Nc4.”

27.Bf1 Raf8 28.Rd1 b5 29.a4 a6 30.axb5 axb5 31.Rc7 Rg7 32. Nb3 Nh4 33.Rc2 Bh3!



(B) - “What a picture! The Queen's wing is by now completely deserted, while seven pieces assail the White King; now the square g2 is attacked four times, and there is obviously nothing left to defend it with: on 34...gxh3 there follows mate in three moves, and 34...Rxf3 is threatened too.”

34.Qe2 Nxf3 35.Bxf3 Bxf3+ 36.Qxf3 Qh4 37.Qxf7+ Kxf7 38. Rg2+ Kh8 39.Ne1 Nf4 40.Rg3 Bf2 41.Rg4 Qh3 42.Nd2 h5

(B) - “Here the game was adjourned...”

43.Rg5 0-1

(B) - “White resigned without further play. After 43...Rg8 44. Rxf8+ Kxf8 he has no defense against mate.”

(SK) - White resigned, because 43...Ne2 decides immediately.

TABLE OF VARIATIONS

Najdorf's Games with the King's Indian Defense (Arranged by ECO opening code. Numbers refer to game)

	1.d4 Nf6 2.c4 g6	Game #
E60	3.Nf3 Bg7 4.g3 O-O 5.Bg2 d6 6.O-O Nbd7 7.b3	1-3
	3.Nf3 Bg7 4.g3 O-O 5.Bg2 d6 6.b3 Bd7	4-5
E61	3.g3 Bg7 4.Bg2 O-O 5.Nc3 c5 6.d5 e5	6-7
	3.Nc3 Bg7 4.Nf3 d6 5.Bf4	8-9
	3.Nc3 Bg7 4.Nf3 d6 5.e3	10-12
E63	3.Nc3 Bg7 4.Nf3 d6 5.g3 O-O 6.Bg2 Nc6 7.O-O a6	13
E64	3.Nc3 Bg7 4.Nf3 d6 5.g3 O-O 6.Bg2 c5 7.h3	14
	3.Nc3 Bg7 4.Nf3 d6 5.g3 O-O 6.Bg2 c5 7.d5	15-17
E65	3.Nc3 Bg7 4.Nf3 d6 5.g3 O-O 6.Bg2 c5 7.O-O Nc6	18-19
1.d4 Nf6 2.c4 g6 3.Nc3 Bg7 4.Nf3 d6 5.g3 O-O 6.Bg2 Nbd7 7. O-O e5		
E67	8.b3 Re8 9.e3 c6 10.Bb2 e4 11.Nd2 d5	20-21
	8.dxe5 dxe5 9.Bg5	22-23
	8.dxe5 dxe5 9.Qc2 c6 10.Rd1	24-26
	8.h3 Re8	27-28
	8.h3 c6 9.dxe5 dxe5	29-31
	8.h3 c6 9.Be3	32
	8.Qc2 c6 9.Rd1 Re8	33-34
	8.d5 a5 9.e4	35-37

**1.d4 Nf6 2.c4 g6 3.Nc3 Bg7 4.Nf3 d6 5.g3 O-O 6.Bg2 Nbd7 7.
O-O e5 8.e4**

E68	8...Re8	38-41
	8...exd4 9.Nxd4 Re8 (9...Nc5) without c7-c6	42-45
	8...c6 9.a3	46
	8...c6 9.Qc2 Re8 10.Rd1 Qc7	47
	8...c6 9.Qc2 Re8 10.Rd1 Qe7	48-51
	8...c6 9.Qc2 Re8 10.Rd1 a5	52-53
	8...c6 9.Rb1	54

**1.d4 Nf6 2.c4 g6 3.Nc3 Bg7 4.Nf3 d6 5.g3 O-O 6.Bg2 Nbd7 7.
O-O e5 8.e4 c6 9.h3**

E69	9...Nh5	55
	9...Qb6 10.d5	56-57
	9...Qb6 10.Re1 Re8 11.dxe5	58
	9...Qb6 10.Re1 Re8 11.d5	59-61
	9...Qb6 10.Re1 exd4	62-64
	9...Re8 10.Be3 Qc7	65
	9...Re8 10.Be3 Qe7	66
	9...Re8 10.Be3 exd4 11.Nxd4 Nc5 12.Qc2	67-68
	9...Re8 10.b3	69-72
	9...Re8 10.Re1 exd4 11.Nxd4 a5 12.Bf4	73
	9...Re8 10.Re1 exd4 11.Nxd4 Nc5 12.Bf4	74-75
	9...Re8 10.Re1 a5 12.Rb1	76
	9...Re8 10.Re1 a5 12.Be3	77-81

1.d4 Nf6 2.c4 g6 3.Nc3 Bg7 4.e4 d6

E70	5.Nge2	82
	5.Bd3	83-85
	5.Bg5	86-87
E72	5.g3 c5	88-89
	5.g3 O-O 6.Bg2 e5 7.Nge2 Nbd7 8.O-O c6	90
	5.g3 O-O 6.Nge2 e5 7.Nge2 Nc6 8.d5 Ne7	91
	5.g3 O-O 6.Nge2 e5 7.Nge2 Nc6 8.d5 Nb8	92
	5.g3 O-O 6.Nge2 e5 7.Nge2 Nc6 8.d5 Nd4	93

E73	5.Be2 O-O 6.h4	94-95
E75	5.Be2 O-O 6.Bg5 c5 7.d5 e6 8.dxe6 5.Be2 O-O 6.Bg5 c5 7.d5 e6 8.Qd2 exd5 9.exd5	96 97-99
E76	5.f4 c5 6.d5 O-O 7.Nf3 e6 8.Bd3 exd5 9.cxd5 5.f4 c5 6.d5 O-O 7.Bd3 e6 8.Nge2 exd5 9.cxd5	100 101
E77	5.Be2 O-O 6.f4 Nbd7 7.Nf3 e5 5.Be2 O-O 6.f4 c5 7.d5 e6 8.Nf3 exd5 9.exd5	102 103

1.d4 Nf6 2.c4 g6 3.Nc3 Bg7 4.e4 d6 5.f3

E80	5...e5 6.Be3 exd4 5...e5 6.Nge2 Nbd7 7.Bg5 c6 5...Nbd7 6.Be3 c6 7.Qd2 e5 8.d5 5...Nbd7 6.Be3 e5 8.d5 Nh5	104-105 106-107 108 109
E81	5...O-O 6.Bg5 5...O-O 6.Be3 Nbd7 7.Bd3 e5 8.d5 5...O-O 6.Be3 Nbd7 7.Qd2 c5 5...O-O 6.Be3 a6 7.Bd3 c5	110 111 112 113
E82	5...O-O 6.Be3 b6 7.Nge2 c5 8.g3 5...O-O 6.Be3 b6 7.Nge2 c5 8.Qd2 Nc6 5...O-O 6.Be3 b6 7.Qd2 c5 8.d5 5...O-O 6.Be3 b6 7.Bd3	114 115 116 117
E84	5...O-O 6.Be3 Nc6 7.Nge2 a6 8.Qd2 Rb8	118-120

1.d4 Nf6 2.c4 g6 3.Nc3 Bg7 4.e4 d6 5.f3 O-O 6.Be3 e5

E85	7.dxe5 dxe5 8.Qxd8+ Rxd8	121-122
E86	7.Nge2 c6 8.Qd2 Qa5 7.Nge2 c6 8.Qd2 Nbd7 9.Rd1 7.Nge2 c6 8.Qd2 Nbd7 9.O-O-O 7.Nge2 c6 8.Qd2 exd4	123 124 125 126-128
E87	7.d5 c5	129-130

E88	7.d5 c6 8.Qd2 cxd5 9.cxd5 a6 10.O-O-O Nbd7	131-132
E89	7.d5 c6 8.Nge2 cxd5 9.cxd5 Ne8	133
	7.d5 c6 8.Nge2 cxd5 9.cxd5 Nbd7	134
	7.d5 c6 8.Nge2 cxd5 9.cxd5 a6	135

1.d4 Nf6 2.c4 g6 3.Nc3 Bg7 4.e4 d6 5.Nf3

E90	5...Nbd7 6.Bg5 e5 7.d5 h6 8.Bh4 g5 9.Bg3 Nh5	136
	5...O-O 6.g3	137
	5...O-O 6.h3 Nbd7 7.Be3 e5	138-139
	5...O-O 6.h3 c5 7.d5 a6 8.Be3	140
E91	5...O-O 6.Be2 c5 7.d5 e5 8.dxe6	141
	5...O-O 6.Be2 c5 7.d5 e6 8.O-O Re8 9.dxe6	142
	5...O-O 6.Be2 c5 7.d5 e6 8.O-O exd5 9.exd5	143
	5...O-O 6.Be2 c5 7.d5 e6 8.O-O exd5 9.cxd5	144

1.d4 Nf6 2.c4 g6 3.Nc3 Bg7 4.e4 d6 5.Nf3 O-O 6.Be2 e5

E92	7.dxe5	145-146
	7.d5 c5 8.h3	147
	7.d5 c5 8.O-O	148
	7.d5 c5 8.Bg5 h6 9.Bd2	149
	7.d5 c5 8.Bg5 h6 9.Bh4 Qc7 10.O-O	150
	7.d5 c5 8.Bg5 h6 9.Bh4 Qc7 10.Nd2	151-154
	7.d5 c5 8.Bg5 h6 9.Bh4 g5 10.Bg3 Nh5 11.h4	155-156
E93	7.d5 Nbd7 8.Qc2	157
	7.d5 Nbd7 8.Bg5	158
	7.d5 Nbd7 8.Be3	159
E94	7.O-O c6 8.Rb1 Nbd7 9.b4	160
	7.O-O Nbd7 8.Bg5 exd4 8.Nxd4 Re8 9.f3 c6	161
	7.O-O Nbd7 8.Bg5 h6 9.Be3	162
	7.O-O Nbd7 8.Bg5 h6 9.Bh4	163
	7.O-O Nbd7 8.Be3 Ng4 9.Bg5 f6 10.Bc1	164-166
	7.O-O Nbd7 8.Be3 Ng4 9.Bg5 f6 10.Bh4	167
	7.O-O Nbd7 8.Be3 Ng4 9.Bg5 f6 10.Bd2	168
	7.O-O Nbd7 8.d5 a5 9.Nd2	169

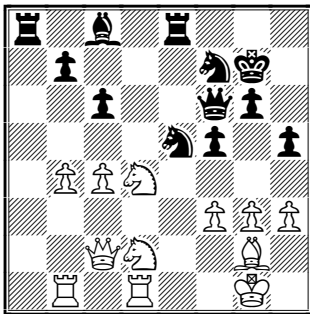
	7.O-O Nbd7 8.d5 a5 9.Ne1	170
	7.O-O Nbd7 8.d5 a5 9.Bg5	171
	7.O-O Nbd7 8.d5 a5 9.Qc2	172-176
	7.O-O Nbd7 8.dxe5	177
E95	7.O-O Nbd7 8.Re1 c6 9.Rb1	178-180
	7.O-O Nbd7 8.Re1 c6 9.Bf1 Ng4	181
	7.O-O Nbd7 8.Re1 c6 9.Bf1 Re8 10.Rb1	182
	7.O-O Nbd7 8.Re1 c6 9.Bf1 Re8 10.d5	183-184
	7.O-O Nbd7 8.Re1 c6 9.Bf1 exd4	185-188
E96	7.O-O Nbd7 8.Re1 c6 9.Bf1 a5 10.d5	189
	7.O-O Nbd7 8.Re1 c6 9.Bf1 a5 10.Rb1 exd4	190-191
	7.O-O Nbd7 8.Re1 c6 9.Bf1 a5 10.Rb1 Re8	192-194
E97	7.O-O Nc6 8.Be3 Ng4	195-196
	7.O-O Nc6 8.Be3 Re8	197
E99	7.O-O Nc6 8.d5 Ne7 9.g4	198
	7.O-O Nc6 8.d5 Ne7 9.Ne1 Nd7 10.f3 f5 11.Be3	199-200
	7.O-O Nc6 8.d5 Ne7 9.Ne1 Nd7 10.Nd3 f5 11.Bd2	201-202

[1]

E60

Hartston W - Najdorf M
Hastings 1971/72

1.Nf3 Nf6 2.g3 g6 3.b3 Bg7 4.Bb2
O-O 5.Bg2 d6 6.d4 Nbd7 7.O-O e5
8.dxe5 Ng4 9.c4 Re8! (After 9...
Ngxe5 10.Nc3 White stands slightly
better) 10.h3 (If 10.Nc3 dxe5! =)
Nh6 11.Qc2 dxe5 12.Rd1 f5 13.
Nbd2 e4 14.Bxg7 Kxg7 15.Nd4 c6
16.Nf1 Qf6 17.b4 Ne5 18.Rab1
Nhf7 19.Nd2 (Informant suggests
19.f4!?, but after 19...exf3 20.exf3
f4! Black is better) a5 20.a3 axb4
21.axb4 h5! 22.f4? exf3 23.exf3



23...Ng4! 24.Nf1 Ne3 25.Nxe3 Rxe3
26.Qd2 f4 27.gxf4 Raa3! 28.Nc2
Rad3 29.Nxe3?! Rxd2 30.Rxd2
Qxf4 31.Rb3 Ng5 32.Rbd3 Bxh3
33.Nf1 Qxc4 34.Rd4 Nxf3+! 35.
Bxf3 Qxf1+ 36.Kh2 Qxf3 0-1

[2]

E60

Olafsson F - Najdorf M
Wijk aan Zee 1971

1.Nf3 Nf6 2.g3 g6 3.b3 Bg7 4.Bb2
O-O 5.Bg2 d6 6.d4 Nbd7 7.O-O e5
8.dxe5 Ng4 9.c4 Re8 10.h3 Nh6 11.
Qc2 dxe5 12.e4 f6 1/2-1/2

[3]

E60

Smyslov V - Najdorf M
Zurich (ct) 1953

1.d4 Nf6 2.Nf3 g6 3.g3 Bg7 4.Bg2
O-O 5.O-O d6 6.b3 e5 7.dxe5 Ng4
8.Bb2 Nc6 9.c4 Re8 10.Nc3 Ngxe5
11.Nxe5 1/2-1/2

[4]

E60

Cruz W - Najdorf M
Mar del Plata 1954

1.c4 Nf6 2.Nf3 g6 3.b3 Bg7 4.Bb2
O-O 5.g3 d6 6.d4 Bd7** (Najdorf

experimented only twice with this original idea for quick exchange of White's lightsquare Bishop - see also next game. After that he abandoned it, though the results was quite satisfactory) 7.Bg2 Qc8 8.O-O Bh3 9.Nbd2 Bxg2 10.Kxg2 a5 11.a3 c5 12.Qc2 (Maybe 12.d5 is stronger) cxd4 13.Nxd4 Nc6 14.N4f3 Re8 15. Rab1 Qg4 16.h3 Qh5 17.Ne4 Nxe4 18.Qxe4 Bxb2 19.Rxb2 Qc5 20.b4 axb4 21.axb4 Nxb4 22.Rfb1 Ra4 23.Qxb7 Nc6 24.Nd2 Nd4 25.e3 Qc6+ 26.Qxc6 Nxc6 27.c5 dxc5 28. Rc2 Ra5 29.Nb3 1/2-1/2

(Note: the symbol ** is used throughout the text to indicate a new or forgotten idea not shown in ECO.)

[5]

E60

De Greiff B - Najdorf M
Mar del Plata 1955

1.Nf3 Nf6 2.c4 g6 3.b3 Bg7 4.Bb2 O-O 5.g3 d6 6.d4 Bd7** 7.Bg2 Qc8 8.O-O Bh3 9.Nbd2 Bxg2 10.Kxg2 e5 11.dxe5 Nfd7 12.Qc2 dxe5 13. Rad1 Nc6 14.h4!? Re8 15.h5 Nd4 16.Bxd4 exd4 17.hxg6 hxg6 18.c5 b6 19.c6 Nf8 20.Qc4 Qg4 21.Rh1 Bf6 22.e4 Rad8 23.Rde1 Qe6 24.e5 Qxc4 25.Nxc4 Be7 26.a4 d3 27.Rd1 Ne6 28.Nb2 Nc5 29.b4 Na6 30. Nxd3 Bxb4 31.Nxb4 Nxb4 32.Rxd8 Rxd8 33.Rh4 a5 (Black stands better) 34.Rd4! (After 34.Rc4? Rd5!

Black has the advantage) Rc8 35. Rc4 Re8 36.Nd4! (Best defensive chance) Rxe5 37.Nb5 Re7 (If 37... Re6 38.Nxc7 Rxc6 38.Rxc6 Nxc6 39. Nd5) 38.Rc1 Kf8 39.Rd1 Ke8 40. Na7 Re6 41.Rc1 Kf8 42.Rc4 Kg7 43.f4 f5 44.Kf3 Kf6 45.Nb5 Na6 46. g4 Re7 47.gxf5 gxf5 48.Rc1 Rh7 49.Re1 Nc5 50.Re8 Ne6 51.Rc8 Rh3+ 52.Kf2 Rh2+ 53.Ke3 Ra2 54. Nxc7 Ra3+ 55.Kf2 Nxc7 56.Rxc7 Rxa4 57.Rb7! (If 57.Ke3 Rc4 with good winning chances for Black) Rxf4+ 58.Ke3 Rc4 59.Rxb6 Kg5 60.Ra6 Kg4 61.Rxa5 f4+ 62.Kf2 Rc2+ 63.Kg1 Kg3 64.Rg5+ Kf3 65. Ra5 Re1+ 66.Kh2 Rxc6 67.Ra3+ Kg4 68.Kg2 Rc2+ 69.Kf1 Rb2 70. Rc3 Rh2 71.Kg1 Re2 72.Kf1 Rb2 73.Ra3 f3 1/2-1/2

[6]

E61

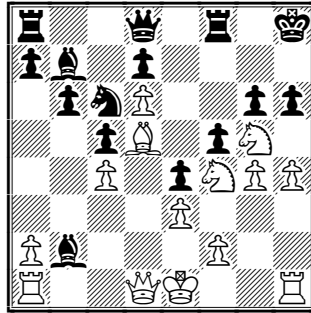
Guimard C - Najdorf M
Havana 1952

1.d4 Nf6 2.c4 g6 3.g3 Bg7 4.Bg2 O-O 5.Nc3 c5 6.d5 e5!? 7.Nh3 d6 8.O-O Nbd7 9.e4 h6 10.f4 exf4 11. gxf4 Re8 12.Qd3?! (12.Qf3!?) a6 13.a4 Ng4 14.Ne2 Qh4 15.Ra3 Rb8 16.Rb3 b5! 17.axb5 Nb6 18.Ra3 axb5 19.cxb5 Bd7 20.b4 cxb4 21. Rb3 Na4 22.Rxb4 Nc5 23.Qg3 Qxg3 24.Nxg3? Nd3 25.Rb1 Bd4+ 26.Kh1 Ndf2+ 27.Nxf2 Nxf2+ 28. Rxf2 Bxf2 29.Ba3 Rb6 30.e5 dxe5 31.Ne4 Bf5 32.Rf1 Bxe4 0-1

[7]

E61

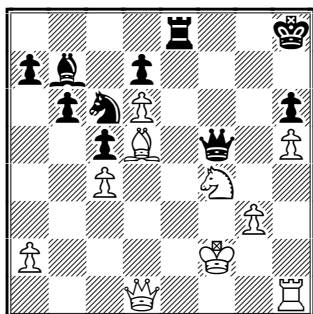
Euwe M - Najdorf M
Zurich (ct) 1953



For this game Euwe received a brilliancy prize.

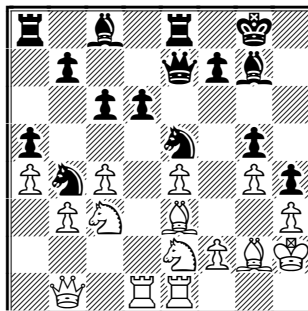
1.d4 Nf6 2.c4 g6 3.g3 Bg7 4.Bg2 O-O 5.Nc3 c5 6.d5 e5!? 7.Bg5 h6 (Both necessary and good, otherwise White will continue Qd2 and will exchange the dark square Bishops by Bh6 - Stahlberg.) **8.Bxf6 Qxf6 9.d6!?** (This move combines two strategic ideas: restraint of Black's Queenside development and cutting the communications between the two wings. White also gains the valuable d5 square for his Bishop and Knights. The negative aspect of 9.d6 is that this pawn may die. Therefore, White's chances are in quick assault of the Kingside - Bronstein.) **9...Nc6 10.e3 b6?!** (This increases White's attacking chances. Right was 10...Kh8!, after which White's next move is impossible - Stahlberg.) **11.Bd5! Kh8** (Better was 11...Ba6, followed by 12...Rb8 and 13...b5 - Najdorf.) **12.Ne4 Qd8 13.h4 f5 14.Ng5 Bb7 15.g4!** (Not 15.Nf7+? Rxf7 16.Bxf7 Nb4 17.Rh2 Qf6 18.Bd5 Bxd5 19.cxd5 e4 with advantage for Black - Stahlberg.) **15...e4 16.Ne2 Bxb2 17.Nf4**

17...Qf6? (If 17...hxg5? 18.hxg5+ Kg7 19.Rh6 etc. The best defense was 17...Bxa1, and now if 18.Nxg6+ Kg7 19.Qxa1+ Qf6 20.Qxf6+ Rxf6 21.Nf4 Rff8! with advantage for Black, but 18.gxf5! Bc3+ 19.Kf1, and White retains his attack - Euwe.) **18.gxf5 Bxa1 19.Nxg6+ Kg7 20.Nxe4** (The simple 20.Nf4, setting up such fearsome threats as 21.Nh5+, 21.Qh5 and 21.Rg1, seems more appealing - Bronstein.) **20...Bc3+** (If 20...Qxf5, then 21.Qxa1+ Kg6 22.Rg1+ - Euwe.) **21.Kf1 Qxf5 22.Nf4 Kh8!** (White must sacrifice the Bishop. If 22...Bf6, then 23.Ng3 Qe5 24.Qg4+, or if 22...Be5, then 23.Ng3 Qh7 24.Qg4+ Kh8 25.Ng6+ and White wins - Euwe.) **23.Nxc3 Rae8?** (Instead, Black should play 23...Nd8! 24.Bxb7 Nxb7, still unclear after White's best 25.Ncd5! - Bronstein.) **24.Nce2 Rg8 25.h5 Rg5 26.Ng3 Rxc3 27.fxc3 Rxe3 28.Kf2 Re8**



29.Re1! (This simple exchange decides the game - Stahlberg.) 29... Rxe1 30.Qxe1 Kg7 31.Qe8 Qc2+ 32.Kg1 Qd1+ 33.Kh2 Qc2+ 34.Ng2 Qf5 35.Qg8+ Kf6 36.Qh8+ Kg5 37. Qg7+ 1-0

and stops all White's play on the Q-side. Black already stands better.) 16.h3 exd4 17.Nxd4 Nc5 18.Kh2 Nfd7 19.Be3 Na6! 20.Nde2 Nb4 21. Qb1 h5! 22.Bd4 h4 23.g4 Ne5 24. b3 g5! 25.Be3



[8]

E61

Cruz W - Najdorf M
Rio de Janeiro (zt) 1957

25...Bxg4! 26.hxg4 Nxg4+ 27.Kg1 Qe5 28.Qc1 (Or 28.f4 gxf4 29.Bxf4 Qc5+ 30.Kh1 Nf2+ with decisive attack.) Qh2+ 29.Kf1 h3 30.Bf3 Ne5 31.Ng1 Nbd3 32.Qd2 g4 33. Ke2 Nxe1 34.Rxe1 gxf3+ 35.Kd1 Qg2 36.Nxh3 Qxh3 37.Rg1 Re6 0-1

1.d4 Nf6 2.c4 d6 3.Nf3 Nbd7 4.Bf4 Nh5 5.Bg5 h6 6.Bd2 e5 7.Nc3 Nhf6 8.Qc2 g6 9.Rd1 c6 10.g3 Bg7 11. Bg2 O-O 12.O-O Re8 13.e4 (After this unusual order of moves the position is characteristic for the variations with Bf4.) Qe7 14.Rfe1 a6!? 15.a4? (Typical strategic mistake. Right is 15.h3 b5 16.cxb5 axb5 17.a3, followed by Be3, with approximately equal chances.) a5! (Takes the b4-square under control

[9]

E61

Held K - Najdorf M
Mar del Plata 1979

1.d4 Nf6 2.Nf3 g6 3.Bf4 Bg7 4.c4 O-O 5.Nc3 d6 6.e3 Nh5 7.Bg5 h6 8. Bh4 f5!??*